



## PROMOTIVE BLUE

### Key benefits

- Designed for high-performance commercial vehicles with standard power demands
- Extended Original Equipment (OE) technology and lowest water consumption for greatest TCO savings
- Meets EN requirements (EN 3) standard and vibration resistance (V2)

For more information visit [www.varta-automotive.com](http://www.varta-automotive.com)

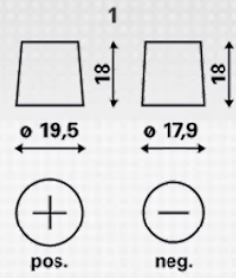
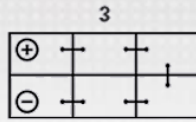
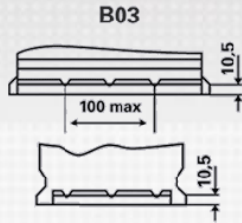
### ORDER INFORMATION

European Type No. (ETN):	640 400 080
Article Number:	640 400 080 A73 2
Short Code:	K8
Barcode:	4016987128855
Packaging Unit:	1
Quantity per Pallet:	24

### TECHNICAL INFORMATION

Voltage [V]:	12	Base Hold-down:	B03
Battery Capacity [Ah]:	140	Layout:	3
Cold Cranking Amps (CCA), EN [A]:	800	Terminal Types:	1
Length [mm]:	513	Case Size:	Typ A
Width [mm]:	189	Weight filled (kg):	35,760
Height [mm]:	223		

## DRAWINGS



## LABYRINTH LID TECHNOLOGY



### Anti-spill

The unique Labyrinth lid design in every Promotive Silver and Blue battery provides 100% spill protection, even at up to 90° tilt. Here's how it works:

- 1 Water vapour condenses on the battery lid.
- 2 Labyrinth lid design ensures water flows safely back into the battery.



### Safety caps

The robust safety caps work like a breakwater inside the battery and ensure maximum spill protection even when faced with strong vibrations.

### Central degassing

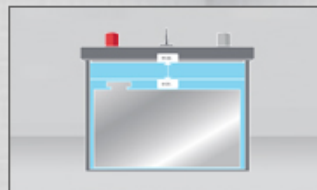
Integrated single point venting in the Labyrinth lid allows safe discharge of any gasses produced, while Integral flame arrestors protect the battery from sparks and flames.

- 3 Integral flame arrestors.
- 4 Single point venting

### Acid reserve design Super Heavy Duty (SHD) technology



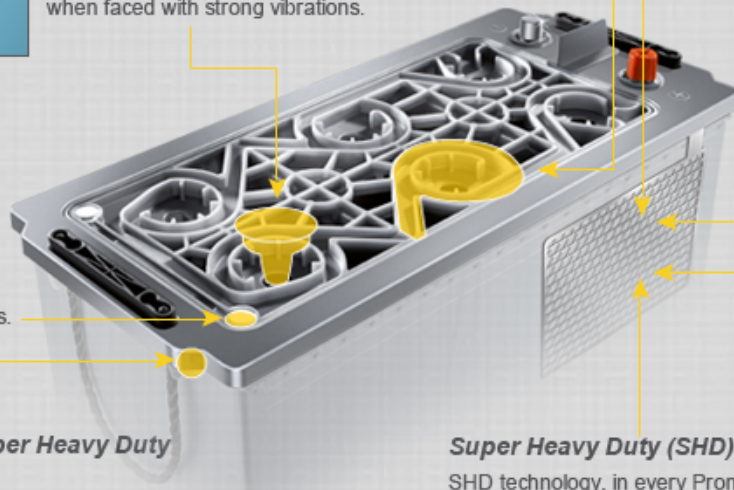
Conventional battery with traditional design.



New design with deeper-set electrodes for greater acid capacity.

### Calcium-silver technology

The calcium-silver technology housed in every Promotive Silver and Promotive Blue battery delivers in-exhaustible power reserves to meet any challenge. The grid alloy, unique in Europe, is formed of a positive calcium-silver grid and a negative calcium grid, reducing the battery's water consumption to a minimum. The use of thicker electrodes also drastically increases cyclic stability.



- 5 Positive grid: calcium-silver.
- 6 Negative grid: calcium.

### Super Heavy Duty (SHD) technology

SHD technology, in every Promotive Silver battery, brings together our optimised grid design and micro glass pocket separator. This robust technology is ideal for HGVs, trucks, buses and heavy construction vehicles that need to work hard day after day.

The glass mat provides three times the cyclic stability and ten times the vibration resistance of conventional batteries. While its unique design keeps the electrolyte in close contact with the grid at all times. So you get the highest performance, even in the coldest starting conditions.



Criteria	Promotive Silver	Promotive Blue	Promotive Black
<b>No. of Battery Types</b>	3 Types	5 Types	36 Types
<b>Reduction potential in Total Cost of Ownership (TCO)*</b>	Best	Better	Good
<b>Technology</b>	Labyrinth Lid	Labyrinth Lid	Conventional Lid
<b>Grid Alloy</b>	Calcium Silver	Calcium Silver	Hybrid
<b>Vibration Resistance</b>	Long Life Super Heavy Duty (EN4 V3 Standard)	Long Life Heavy Duty (EN3 V2 Standard)	Long Life (EN2 V1 Standard)
<b>Quality Level</b>	Original equipment	Original equipment	Original equipment
<b>Self Discharge Performance* (shelf life)</b>	18 Months	15 Months	12 Months
<b>Water Consumption</b>	Extremely Low	Very Low	Low

\* Compared to conventional non maintenance-free batteries